



INSTAL-SERVICE PL

Spółka z ograniczoną odpowiedzialnością
Spółka komandytowa

58-506 Jelenia Góra, ul. Wrocławska 15a

Through connection block type BPP2- 5BU/2 for rated voltage 500V



Through connection block type BPP2-5BU/2 is a device designed for use in underground mining pits in non-explosive coal dust conditions and on the ground.

Through connection block type BPP2-5BU/2 is designed for connecting and distributing power in mine three-phase grid with isolated star point transformer (IT system) for rated grid voltage of 500V.

Wires are connected to the block via clamps through cable glands.

TECHNICAL DATA:

ingress protection

IP54

insulation rated voltage of main circuits

660 V

rated power supply voltage

3x500V,50Hz,IT grid

rated current of the outlets

160 A, 250 A, 400 A

dimensions

1300 x 900 x 370mm (H x W x D)

weight

90 kg

CONSTRUCTION

The through connection block housing is made of steel sheets. The whole unit is based by a common support frame. The housing is equipped with brackets that allow for the switchgear to be hung on a chain or to be placed directly on the ground.

MODE OF OPERATION

In the main 3x500V circuit the through connection block is equipped with a three-position switches 1Q, 2Q: on-off-grounded. Control of the outlets is carried out through drive levers of the switches.

The block's door can only be opened if both switches are in grounded position.

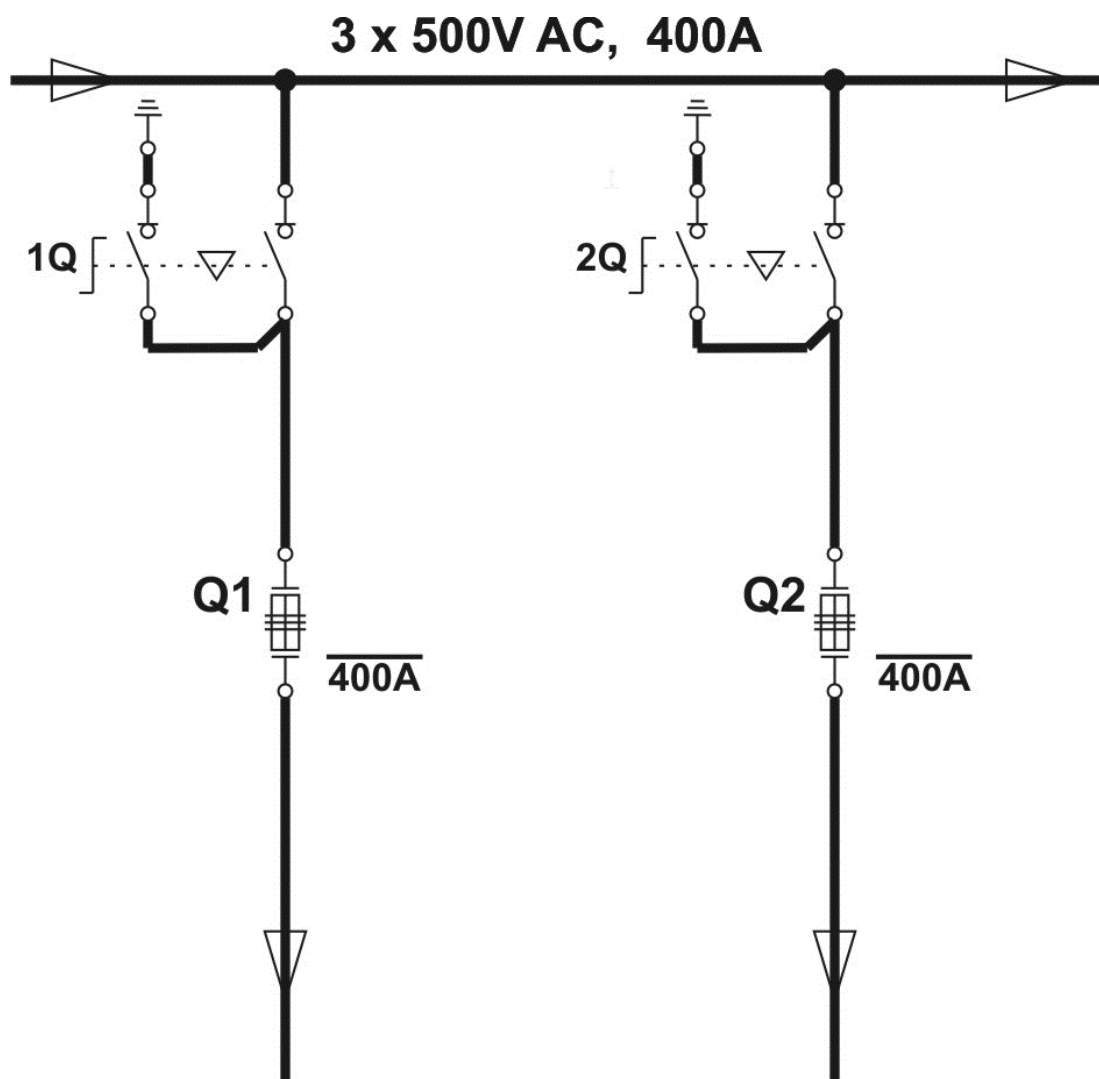
SCHEMATIC DIAGRAM

Legend:

Odplyw 1-2 - outlet 1-2

1Q, 2Q – switch disconnectors

Q1-Q2 – fuses



Orders should be submitted in writing or by fax to the address:

 **Instal-Service PL**

Spółka z ograniczoną odpowiedzialnością
Spółka komandytowa

58-506 Jelenia Góra, ul. Wrocławska 15a

tel. (+48 075) 64-57-950

fax. (+48 075) 64-57-951

e-mai: instal@instal-service.pl